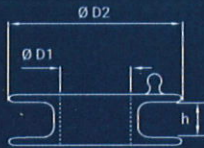
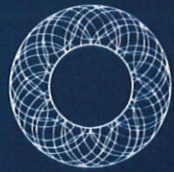


Occlutech AFR

Product specifications



D1 - Diameter of the fenestration
D2 - Diameters of the discs
h - Height of the waist

Perfecting Performance

Article No.	Ø D1 [mm]	Ø h [mm]	Ø D2 [mm]	Sheath Size* [F]	Pusher Article No. (color)**	Pusher Article No. (color)**
					Pistol Pusher	Flex Pusher II
65AFR08M	8	5	21	12	55PP165 ●	51FP120 ●
65AFR08L	8	10	21	12	55PP165 ●	51FP120 ●
65AFR10M	10	5	23	14	55PP165 ●	51FP120 ●
65AFR10L	10	10	23	14	55PP165 ●	51FP120 ●

Availability subject to regulatory approval. Product data may be subject to change. Contact your Occlutech representative for information.

* Occlutech Delivery Set (ODS)

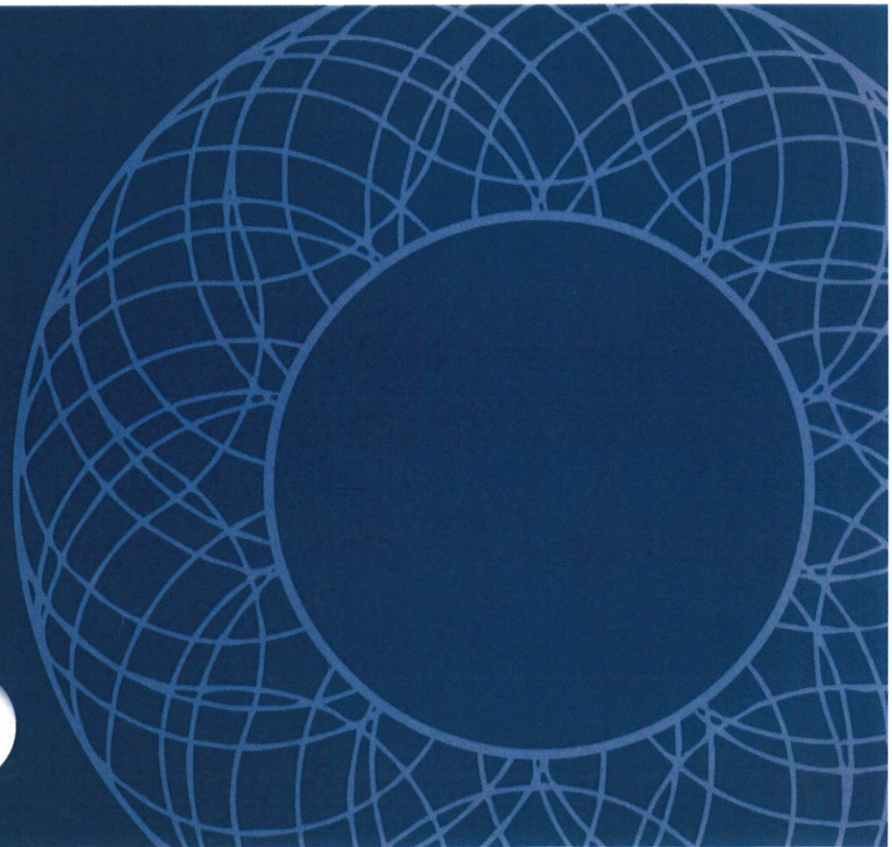
** Pusher is provided in the product box with the occluder. Color code relates to pusher color.



Occlutech Atrial Flow Regulator

Quality made in Europe

Occlutech adheres to the highest quality standards. We never compromise on quality. Our dedication to patients and the medical community is the main driver of our vision. We want to be at the forefront of developing technologies and products that matter, that make a difference and that will help our customers to be at the leading edge of treatment for structural heart disease.



Occlutech International AB
 Landskronavägen 2, SE-252 32 Helsingborg, Sweden
 order@occlutech.com www.occlutech.com



Perfecting flow

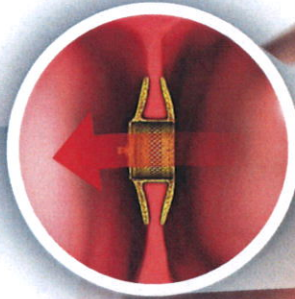


PRODUCT FEATURES

The Occlutech Atrial Flow Regulator (AFR) is a novel cardiac implant, intended for patients who have Heart Failure with Preserved Ejection Fraction (HFpEF) or Heart Failure with Reduced Ejection Fraction (HFrEF). The AFR is a breakthrough innovation for the minimally invasive treatment of patient segments with significant unmet medical needs, or without meaningful treatment alternatives.

Occlutech has developed the AFR using its state-of-the-art nitinol braiding technology and over a decade of experience.

- Implantation route and technique comparable to ASD.
- High flexibility and adaptability.
- Repositionable and fully retrievable.



Left-to-right shunt for heart failure



Repositionable and fully retrievable

High flexibility and adaptability with unique braiding



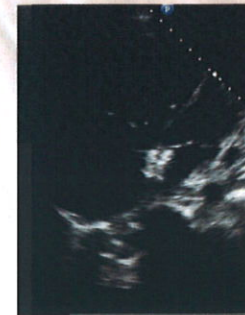
AFR



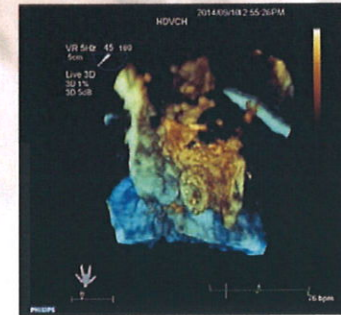
CLINICAL BENEFITS

The Occlutech AFR is intended to create a permanent interatrial communication with a pre-defined diameter. The left-to-right shunt secured by the device allows blood to flow across the interatrial septum. This decompresses the left heart thus reducing debilitating symptoms of Heart Failure.

- Reduced left atrial pressure and improved haemodynamics.
- Improved quality of life and exercise capacity.
- Improved NYHA Functional Class.



The Echocardiography image shows placement of the AFR device in the interatrial septum of a patient.



Post-deployment 3D TEE shows a well-seated AFR.
Courtesy of J. Veetukattil, MD - Congenital Heart Center, Heleen DeVos Children's Hospital of Spectrum Health, Grand Rapids, MI, USA